


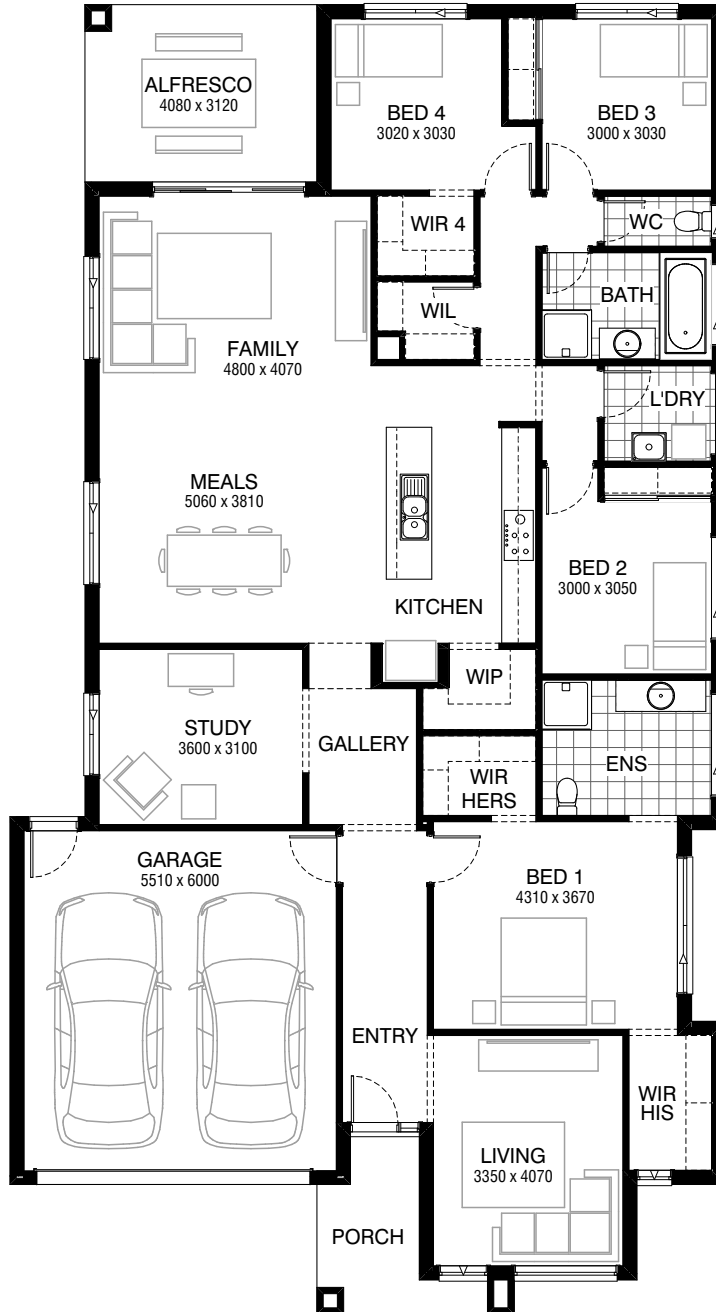


Total squares **271sq**

 **4**  **2**  **2**



FLOORPLAN OPTIONS

All available ready-to-go floorplan options for this design can be viewed on the following pages, or visit www.burbank.com.au.

Facades available:

Drysdale, Arkley, Dowd, Haring	
Nolan, Alpine, Woodland, Felix	
Overall home width	12.59m
Overall home length	23.03m


Residence	196.7m ²	21.2sq
Garage	36.3m ²	3.9sq
Porch	6.1m ²	0.7sq
Alfresco	12.7m ²	1.4sq
Total	251.8m²	27.1sq

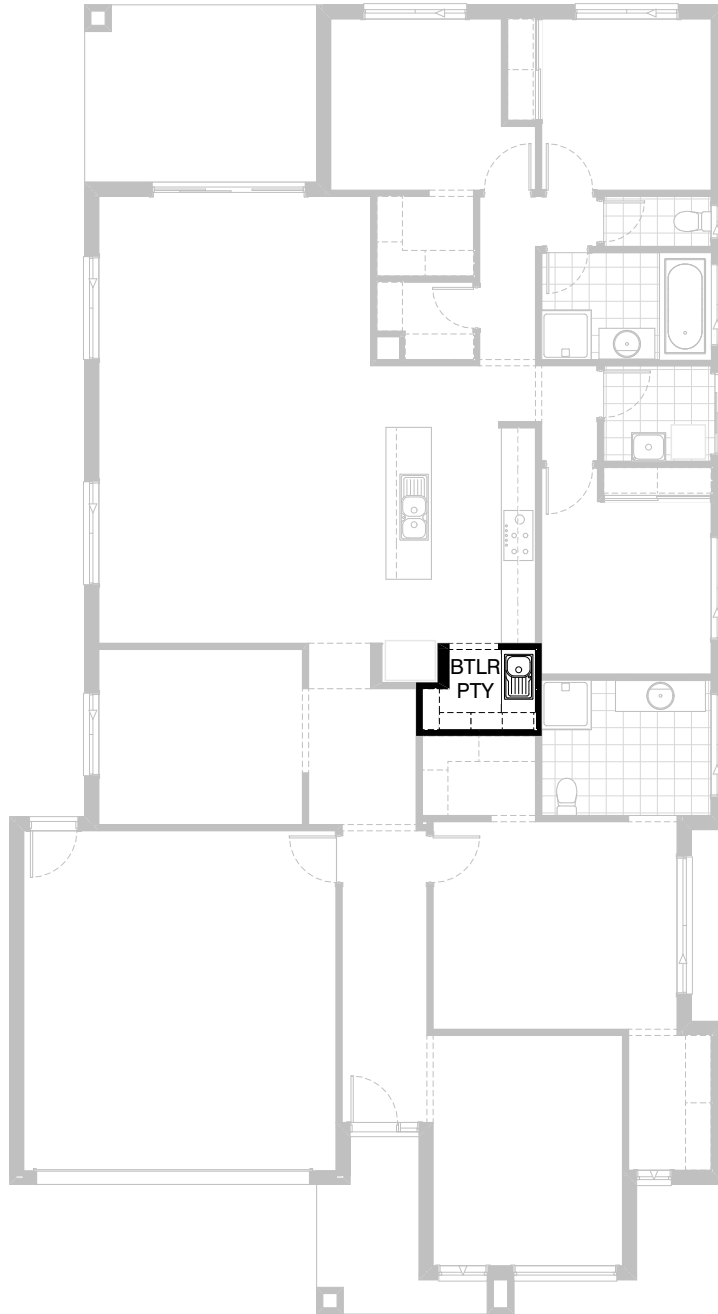
Listed details based on Drysdale façade floorplan (illustrated)

*Copyright conditions. All photos and illustrations are representative only. Floor plans and specifications may be varied by Burbank without notice, the dimensions are diagrammatic only and a Building Contract with final drawings will display correct dimensions and detail. All designs are the property of Burbank and must not be used, reproduced, copied or varied, wholly or in part without written permission from an authorised Burbank representative. Copyright Burbank Australia Pty Ltd. ABN 91 007 099 872. Builders Registration Number CDB-U-52603.

Call 13 BURBANK
Visit burbank.com.au

FLOORPLAN OPTIONS

 **4**  **2**  **2**



Option K-1

Provide Butlers pantry in lieu of WIP with additional 1no. 900mm base cupboard, 1no. 150mm base cupboard, 1no. single bowl sink with drainer, 1800mm(h) laminated carcass with 4no. open shelves and additional tiled splash back and bench top to suit.



FLOORPLAN OPTIONS

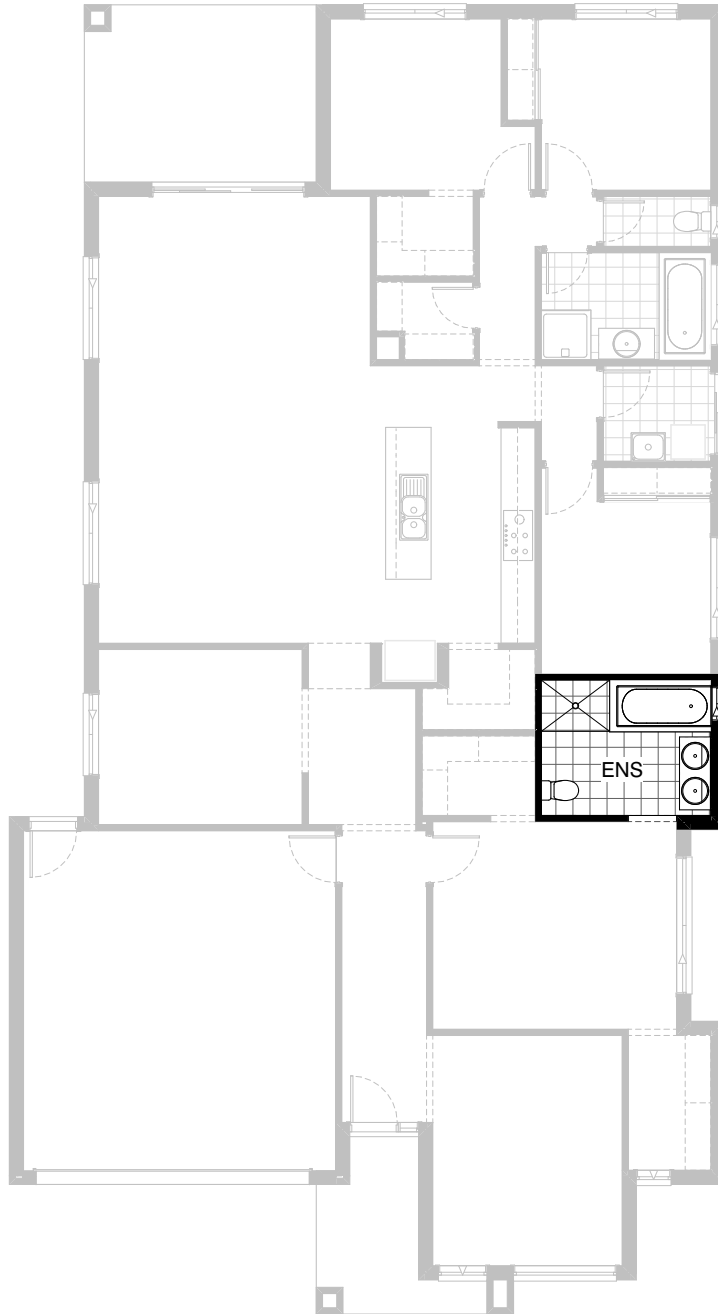


Option LD-1

Provide Laundry upgrade with laminated inset trough,
1no. 800mm base cupboard, 1no. 800mm overhead cupboard
and additional tiled splash back and bench top to suit.

FLOORPLAN OPTIONS


 **4**  **2**  **2**

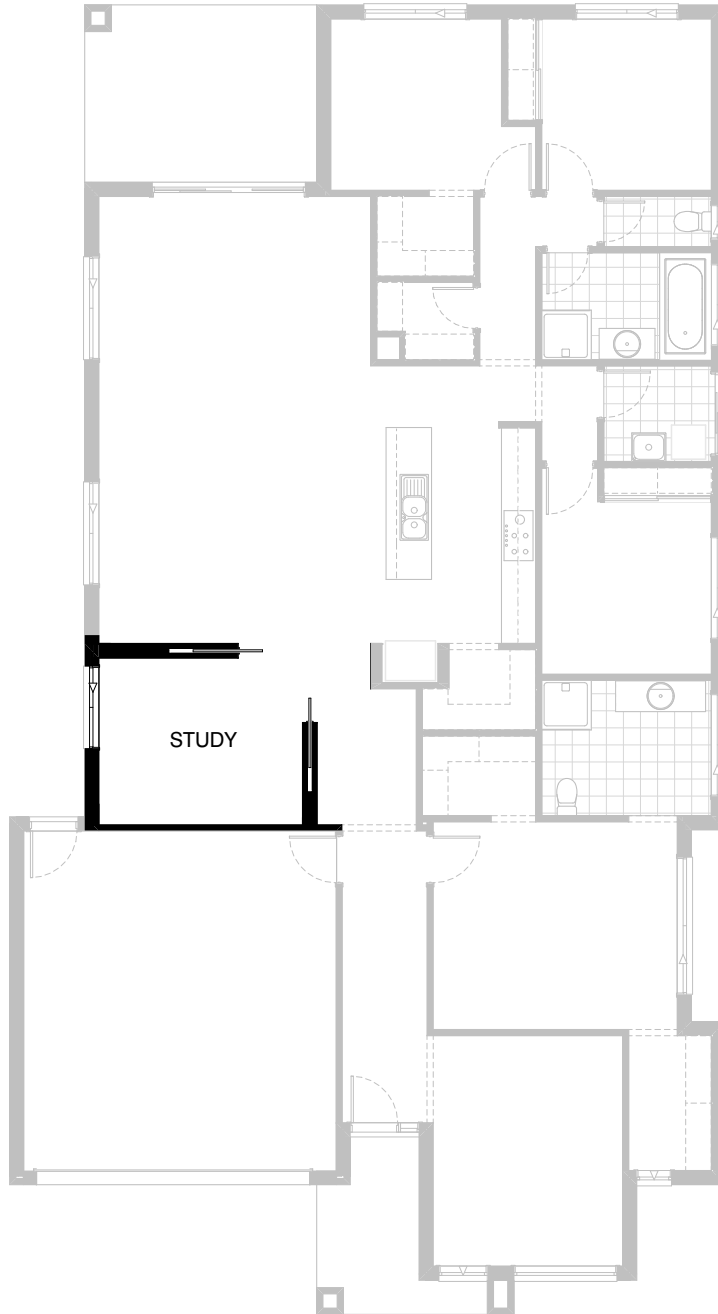


Option ENS-1

Provide Ensuite upgrade with 1no. 1200mm x 610mm aluminium sliding window in lieu of standard, 1no. bath with tiled hob and 1no. 1282mm wide vanity unit with 2no. basins in lieu of standard and provide 1200mm x 900mm tiled shower base and toilet to suit.

FLOORPLAN OPTIONS

 **4**  **2**  **2**



Option IP1-1

Provide 1200mm corner cavity sliding doors to Study and delete plaster bulkhead to Meals / Foyer.

FLOORPLAN OPTIONS



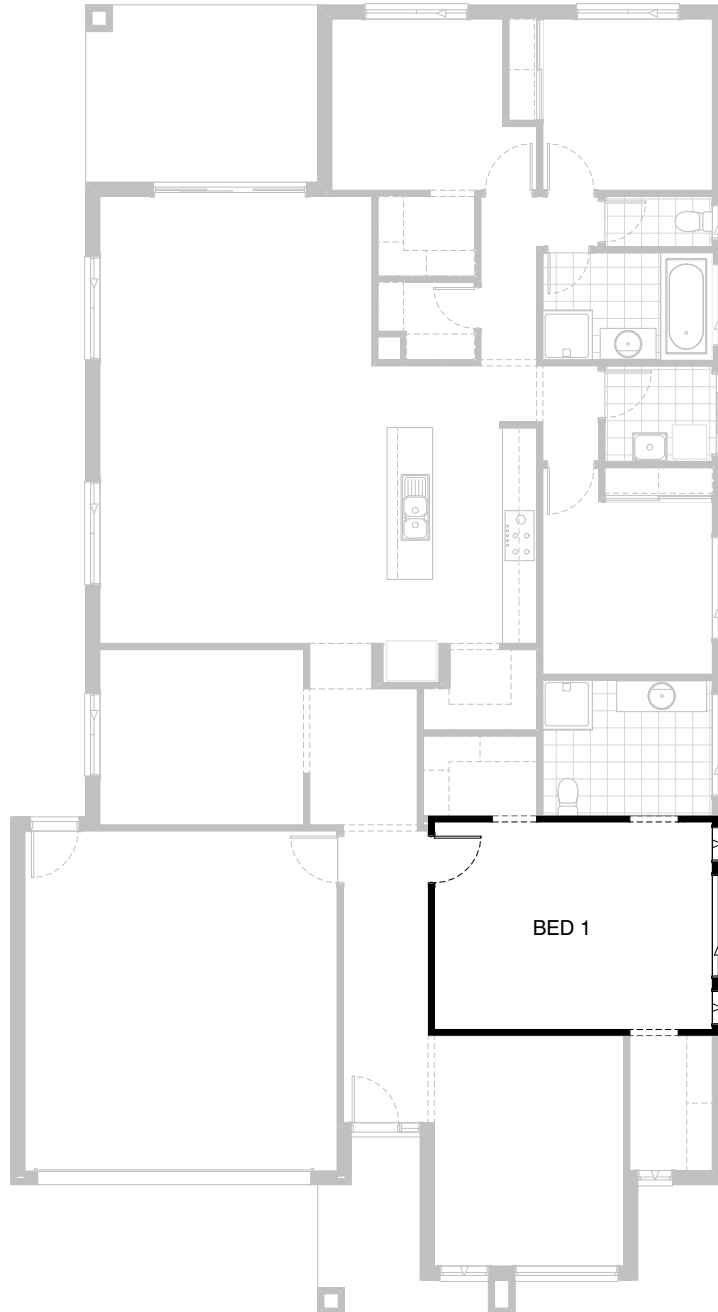
4



2



2



Option IP1-2

Increase Bed 1 external wall by 600mm and provide
2no. 1543mm x 610mm aluminium awning windows and
1no. 514mm x 1810mm Sliding window in lieu of standard.

FLOORPLAN OPTIONS



4



2



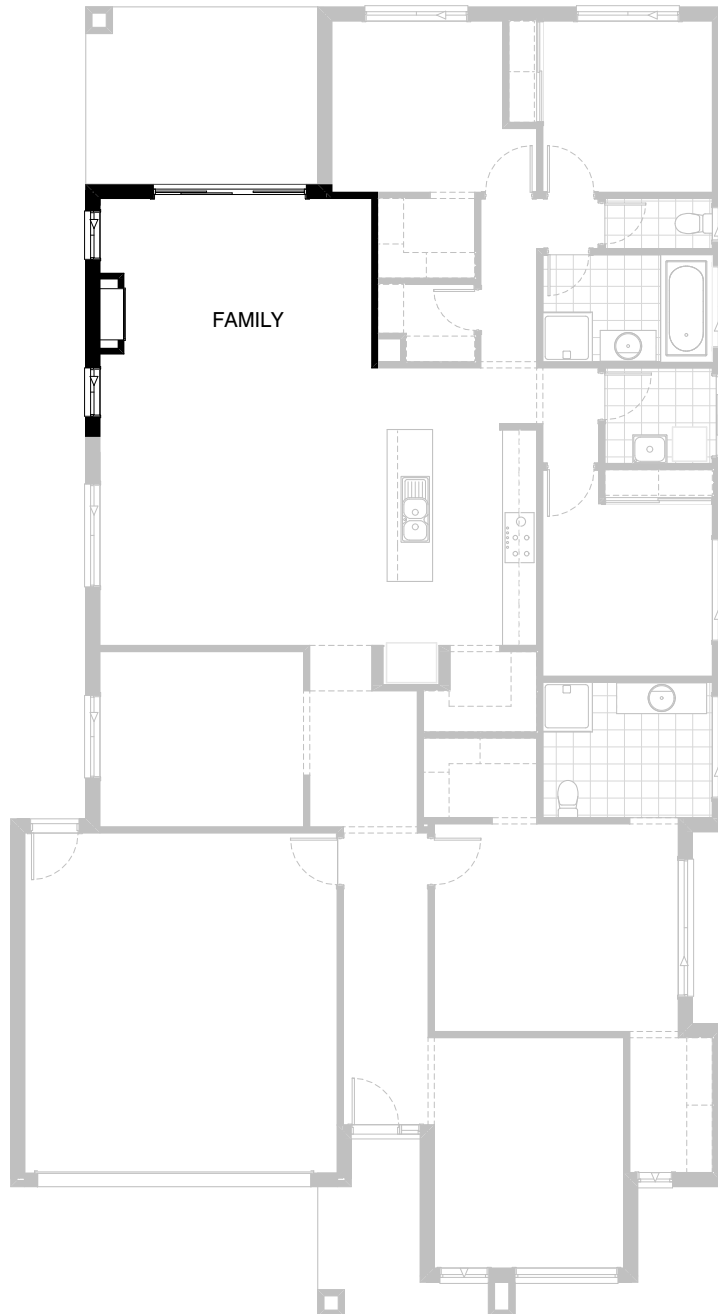
2



Option IP1-3

Provide Bed 5 in lieu of standard Living with additional 1no. 820mm flush panel hinged door and site built plaster lined robe and 1no. hanging rail and shelf.

FLOORPLAN OPTIONS



Option IP1-4

Provide Real Flame Inspire 900 gas fireplace, 400mm off floor level in a 1400mm x 420mm boxed out plaster wall with a 4 sided black fascia to Family room side wall with additional 2no. 1800mm x 850mm aluminium sliding windows in lieu of standard 1no. 1800mm x 1810mm window.

FLOORPLAN OPTIONS



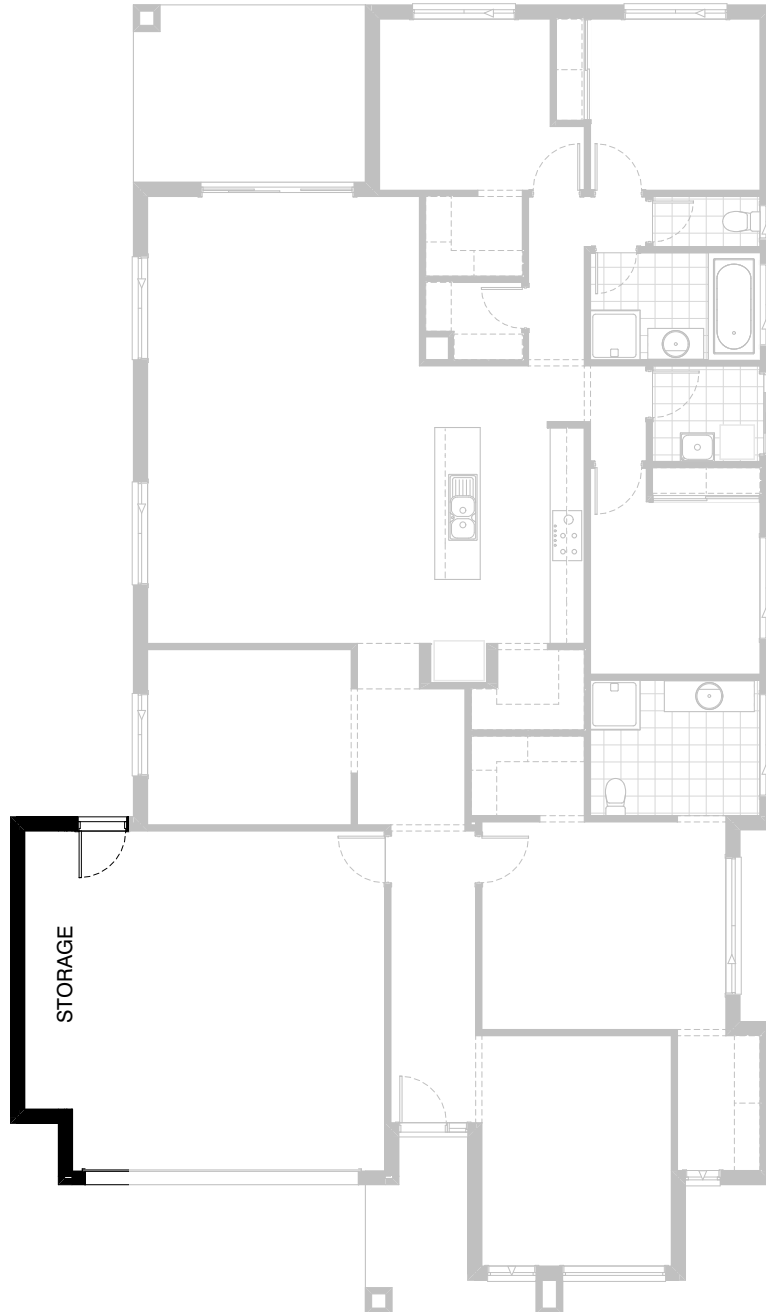
4



2





2

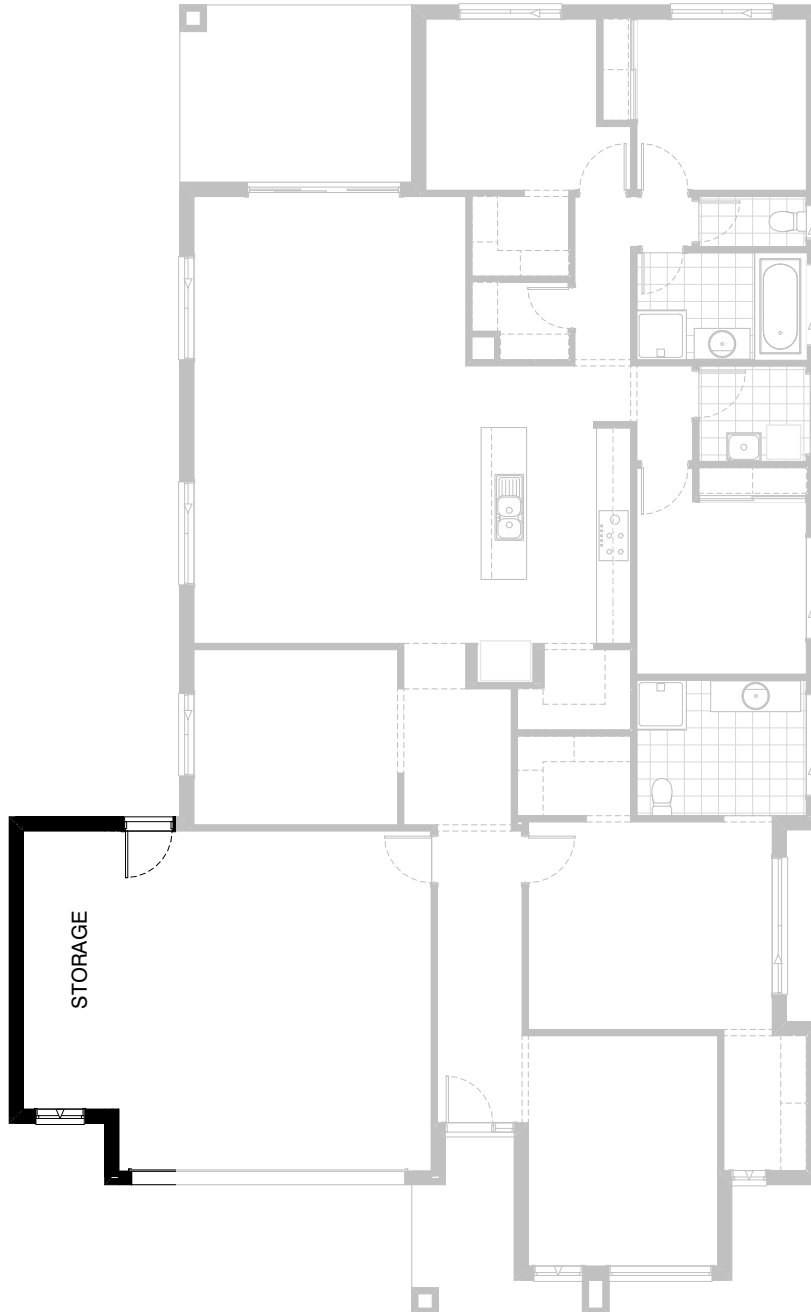


Option G-1

Provide extension to Garage to create additional Storage area.
Increases area by 4.53m².
Increases width by 840mm.

FLOORPLAN OPTIONS

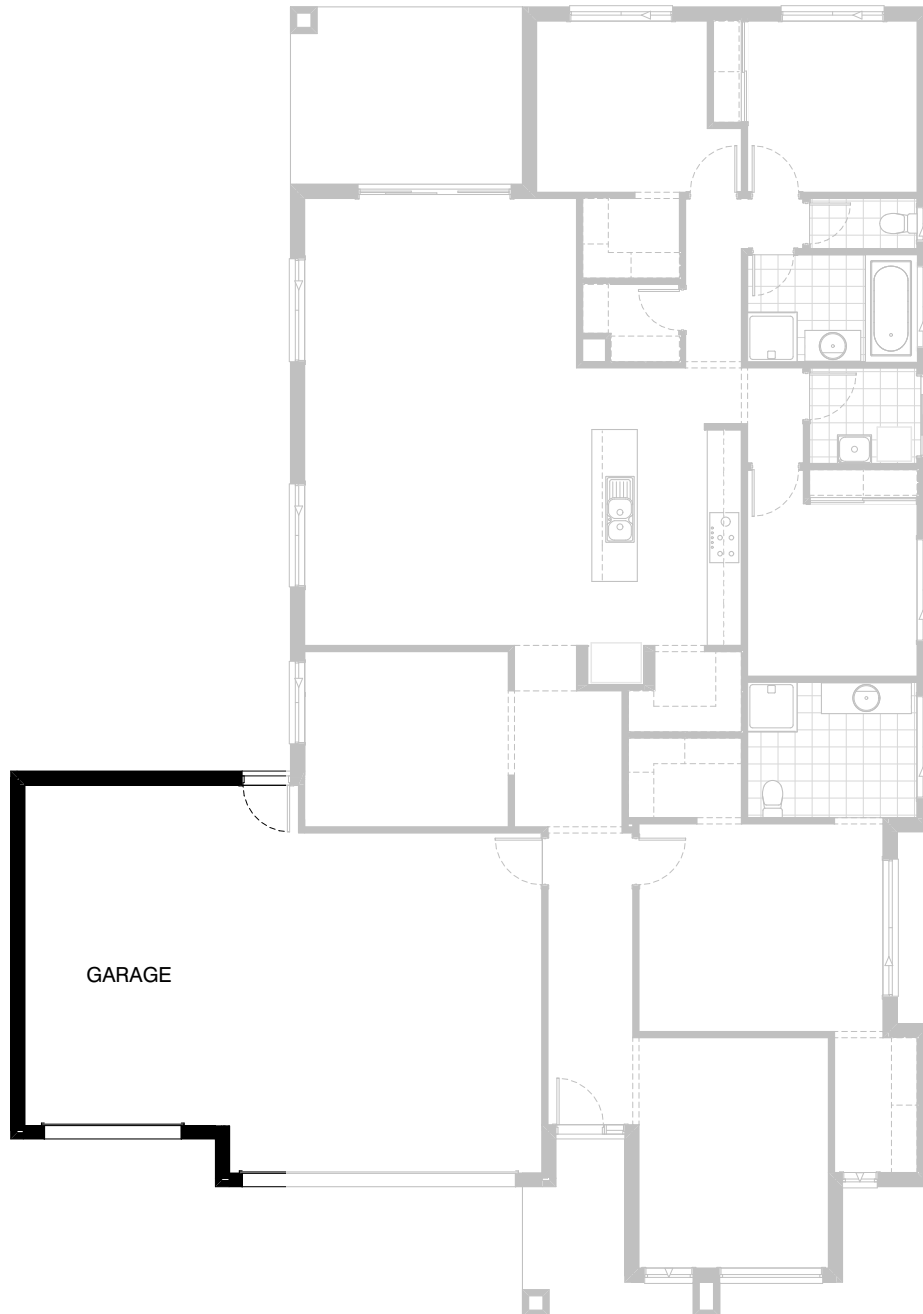
 **4**  **2**  **2**



Option G-2

Provide extension to Garage to create Storage area including additional 2057mm x 850mm feature aluminium awning window to suit.
Increases width by 1680mm.
Increases area by 9.06m².

FLOORPLAN OPTIONS



Option G-3

Provide triple car Garage including additional roller door to front.
Adjust window to study.
Increases area by 24.40m².
Increases width by 3600mm.